



**Weymouth BID**

September 2017

28/08/2017 to 01/10/2017



REGION - South West

Monday to Sunday

COUNT TYPE: Footfall Counts

**Monthly Footfall**

Benchmark calculations (Year on Year and Month on Month) have been calculated using like for like data sets (only those counters available in both comparison periods) to ensure statistical accuracy

	Year to Date % Change		Year on Year % Change		Month on Month % Change	
	2017	2016	2017	2016	2017	2016
Weymouth BID	▼ -1.1 %	▲ 4.4 %	▼ -2.7 %	▲ 3.2 %	▼ -27.9 %	▼ -27.4 %
South West	▼ -0.8 %	▼ -0.4 %	▼ -2.7 %	▲ 0.9 %	▼ -13.5 %	▼ -13.9 %
High Street Index(Coastal Town)	▼ -2.7 %	▼ -2.9 %	▼ -5.0 %	▼ -1.0 %	▼ -18.0 %	▼ -13.7 %
UK	▼ -0.3 %	▼ -1.6 %	▼ -2.4 %	▼ -0.7 %	▼ -5.0 %	▼ -4.8 %

**Headlines**

Footfall for the year to date is 1.1% down on the previous year.

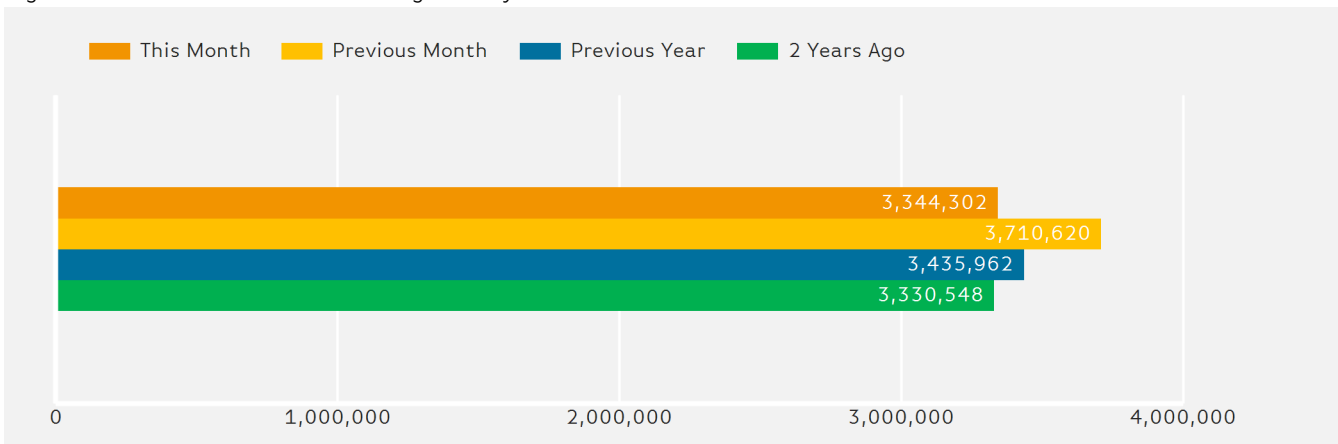
The number of visitors counted for month commencing 28 August 2017 was 3,344,302.

The busiest day in month commencing 28 August 2017 was Saturday 2 September with 132,992 visitors.

The peak hour of the month was 13:00 on Saturday with footfall of 17,052

**Footfall by Month**

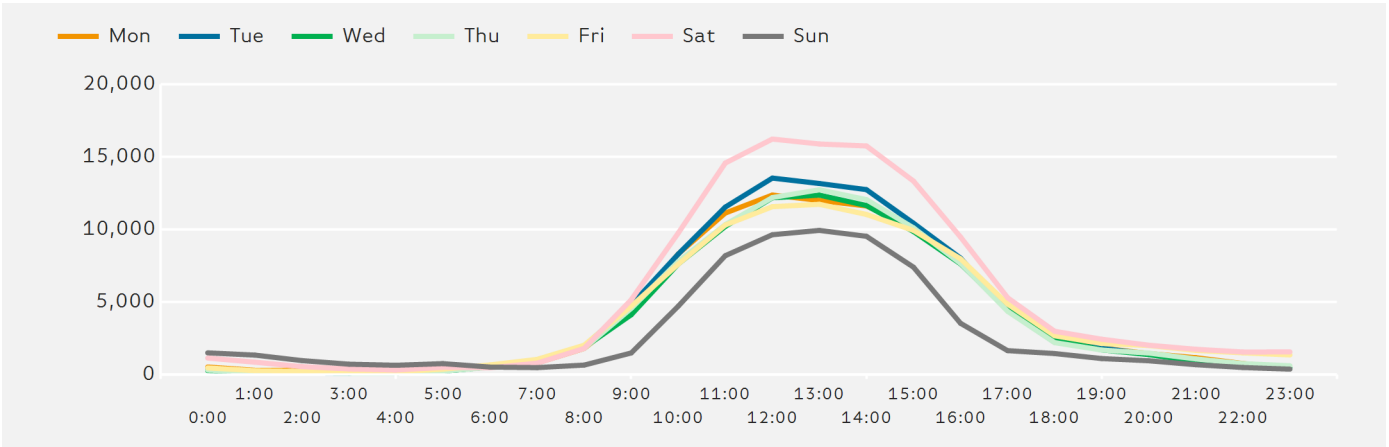
Figures shown below are calculated using monthly totals.



Springboard follows the BRC calendar consisting of complete weeks (Sun- Sat or Mon-Sun) to ensure that the same day is comparable each week. Each month is compiled from a set of full weeks which results in a calendar of a 4 week month, 4 week month, 5 week month pattern.

### Footfall by Hour

The figures shown below are calculated using a weekly average



### Weather



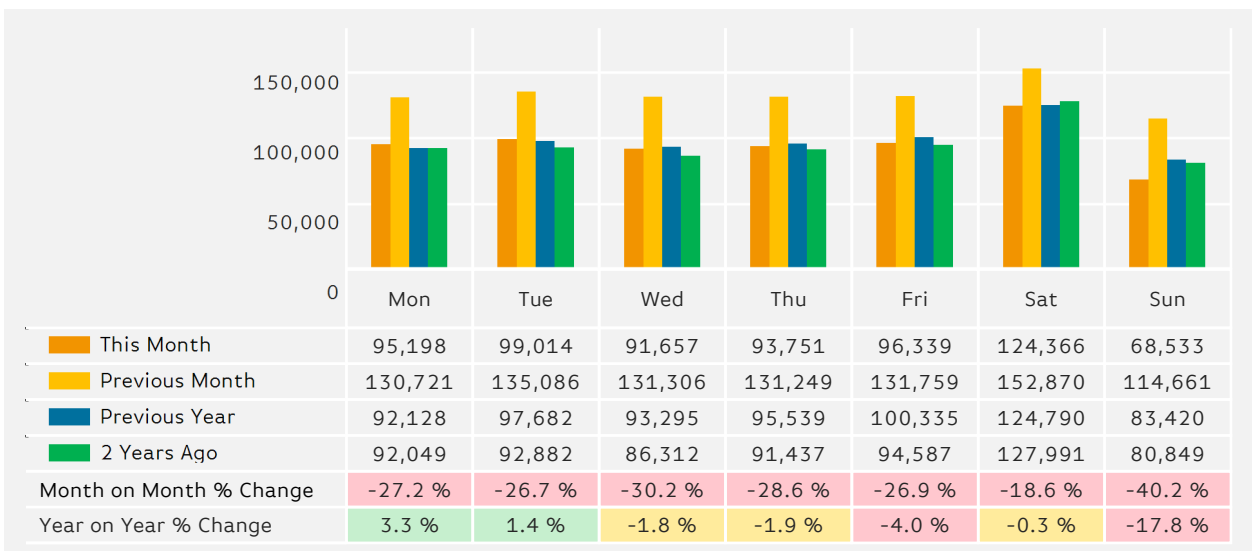
Number of days this month	2	16	4	13
Number of days same month last year		15	15	5

### Average Temperature

Average Temperatures	Maximum Temperature	Minimum Temperature
2017	17.3	12.0
2016	20.1	11.6

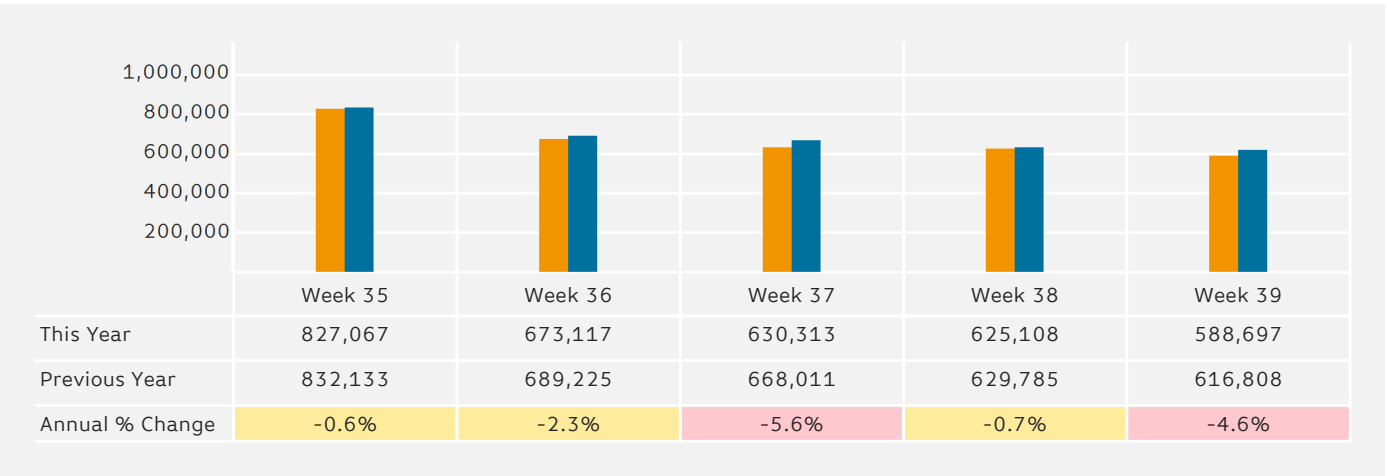
### Footfall by Day

The figures shown below are calculated using weekly averages.



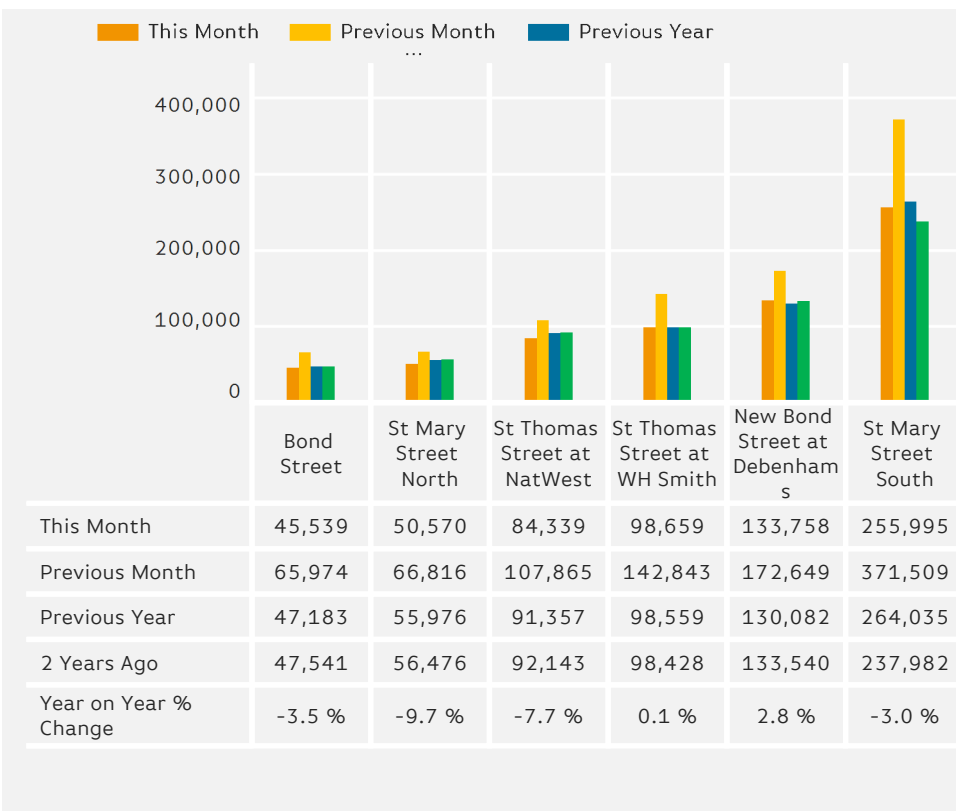
### Footfall by Week of Month

The figures shown below are calculated using weekly totals.



### Footfall by Location

The figures shown below are calculated using weekly averages.



### Footfall by location

Counting By Location - Main Locations Only

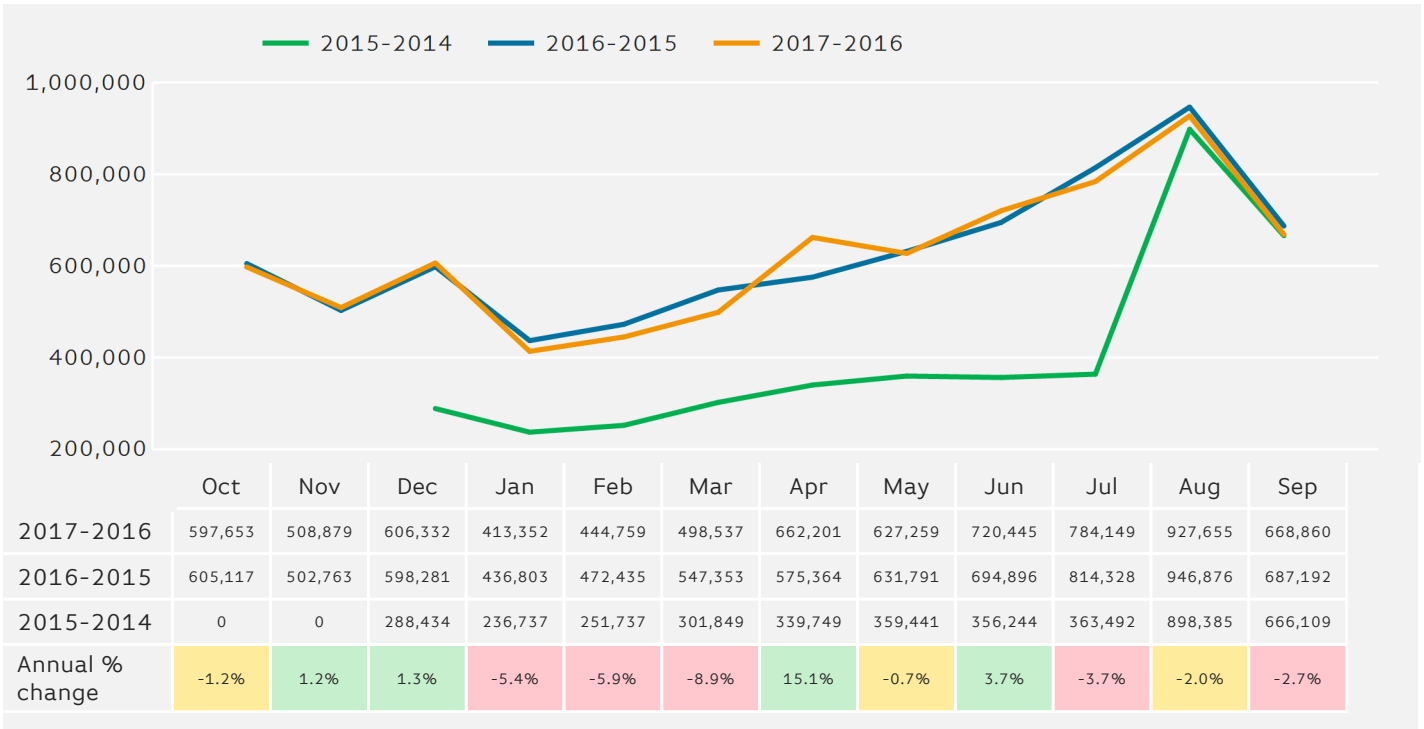
The figures shown below are based on weekly averages



- St Mary Street South, 38.3 %
- New Bond Street at Debenhams, 20.0 %
- St Thomas Street at WH Smith, 14.8 %
- St Thomas Street at NatWest, 12.6 %
- St Mary Street North, 7.6 %
- Bond Street, 6.8 %

**Footfall - Rolling 12 Months**

The figures shown below are calculated using weekly averages.



Year to Date % Change is the annual % change in footfall from January of this year compared to the same period last year.  
 Year on Year % Change is the % change in footfall for this week compared to the same week in the previous year.  
 Week on Week % Change is the % change in footfall for this week from the previous week.