



Weymouth BID

July 2016

04/07/2016 to 31/07/2016



REGION - South West

Monday to Sunday

COUNT TYPE: Footfall Counts

Monthly Footfall

Benchmark calculations (Year on Year and Month on Month) have been calculated using like for like data sets (only those counters available in both comparison periods) to ensure statistical accuracy

	Year to Date % Change		Year on Year % Change		Month on Month % Change	
	2016	2015	2016	2015	2016	2015
Weymouth BID	▲ 4.4 %		▲ 4.6 %		▲ 17.3 %	▲ 17.1 %
South West	▼ -0.9 %	▼ -2.2 %	▼ -0.6 %	▼ -3.7 %	▲ 10.8 %	▲ 7.6 %
High Street Index(Coastal Town)	▼ -3.2 %	▼ -2.7 %	▼ -1.8 %	▼ -5.8 %	▲ 14.9 %	▲ 8.4 %
UK	▼ -2.1 %	▼ -1.6 %	▲ 0.0 %	▼ -2.2 %	▲ 7.9 %	▲ 3.3 %

Headlines

Footfall for the year to date is 4.4% up on the previous year.

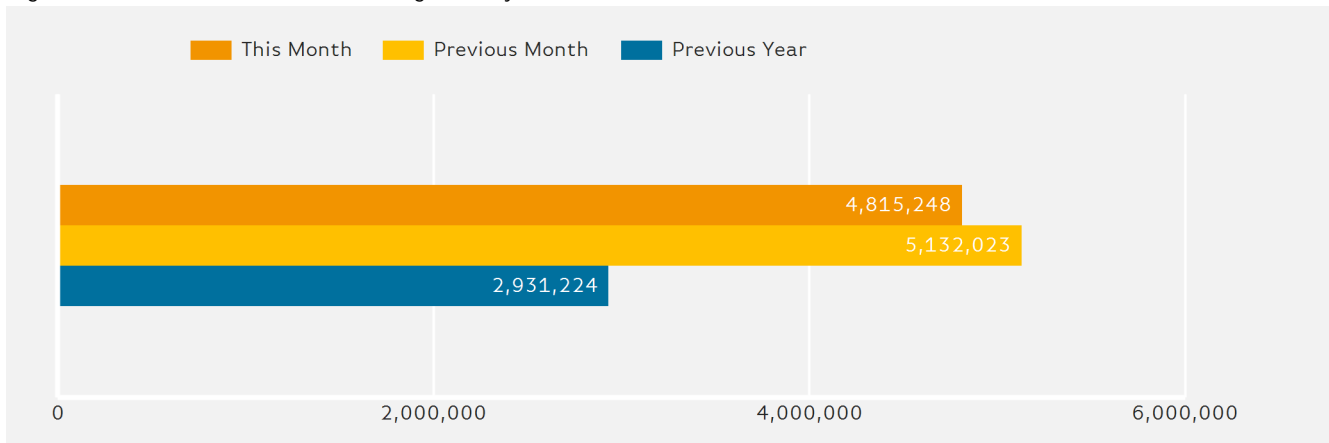
The number of visitors counted for month commencing 4 July 2016 was 4,815,248.

The busiest day in month commencing 4 July 2016 was Saturday 30 July with 232,162 visitors.

The peak hour of the month was 13:00 on Saturday with footfall of 27,742

Footfall Totals by Month

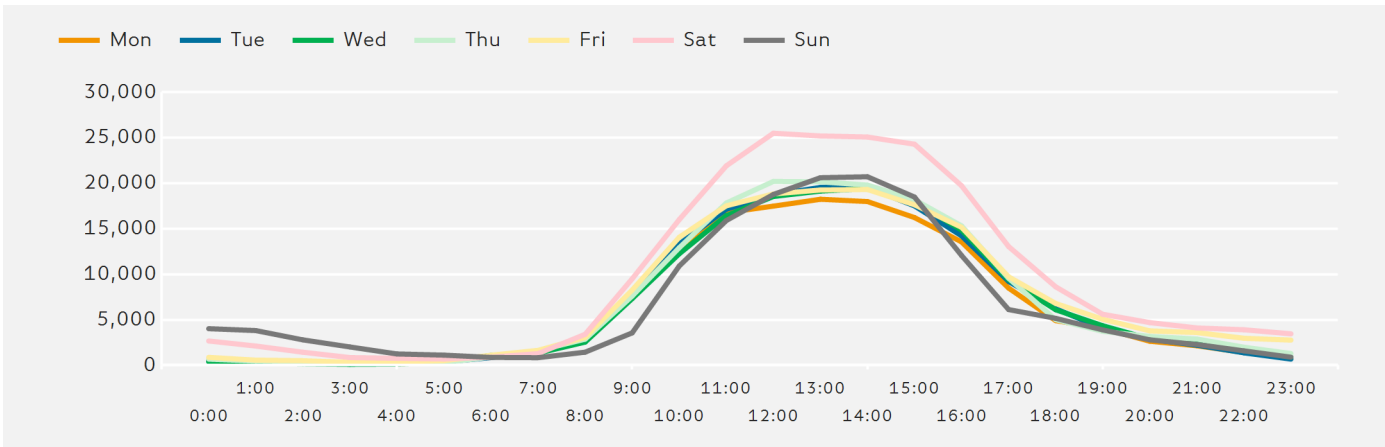
Figures shown below are calculated using monthly totals.



Springboard follows the BRC calendar consisting of complete weeks (Sun- Sat or Mon-Sun) to ensure that the same day is comparable each week. Each month is compiled from a set of full weeks which results in a calendar of a 4 week month, 4 week month, 5 week month pattern.

Footfall by Hour

The figures shown below are calculated using a weekly average



Weather



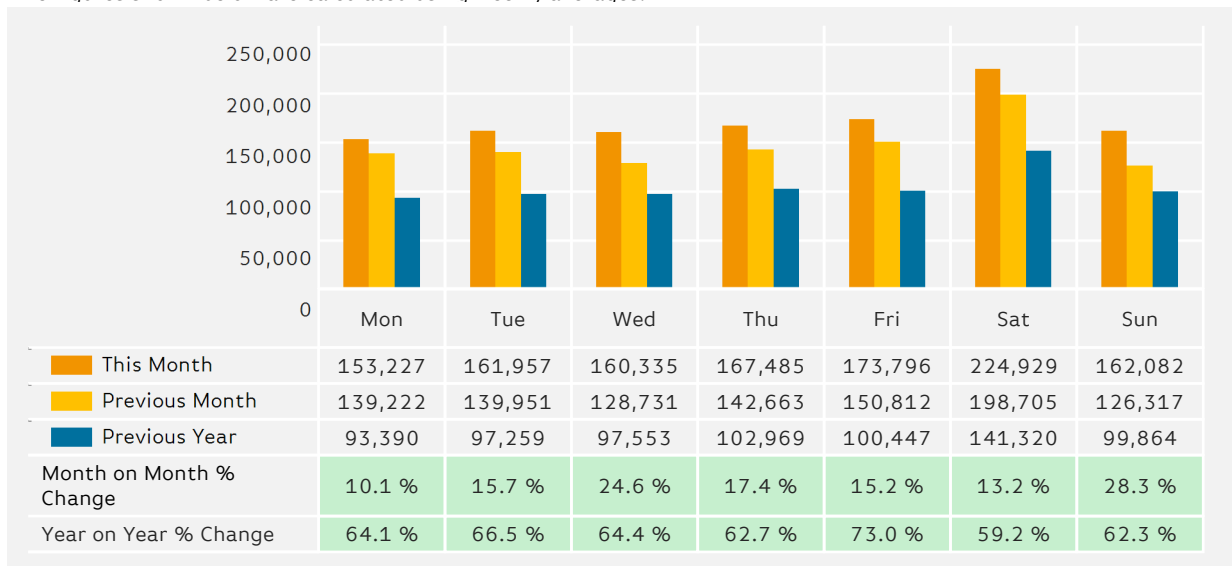
Number of days this month	14	7	7
Number of days same month last year	12	11	5

Average Temperature

Average Temperatures	Maximum Temperature	Minimum Temperature
2016	20.0	13.2
2015	19.9	11.3

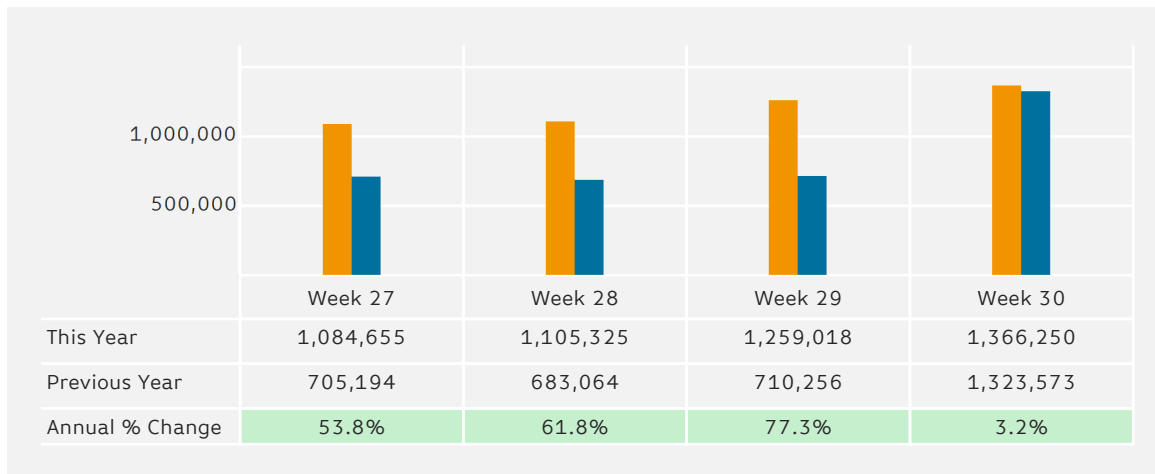
Footfall by Day

The figures shown below are calculated using weekly averages.



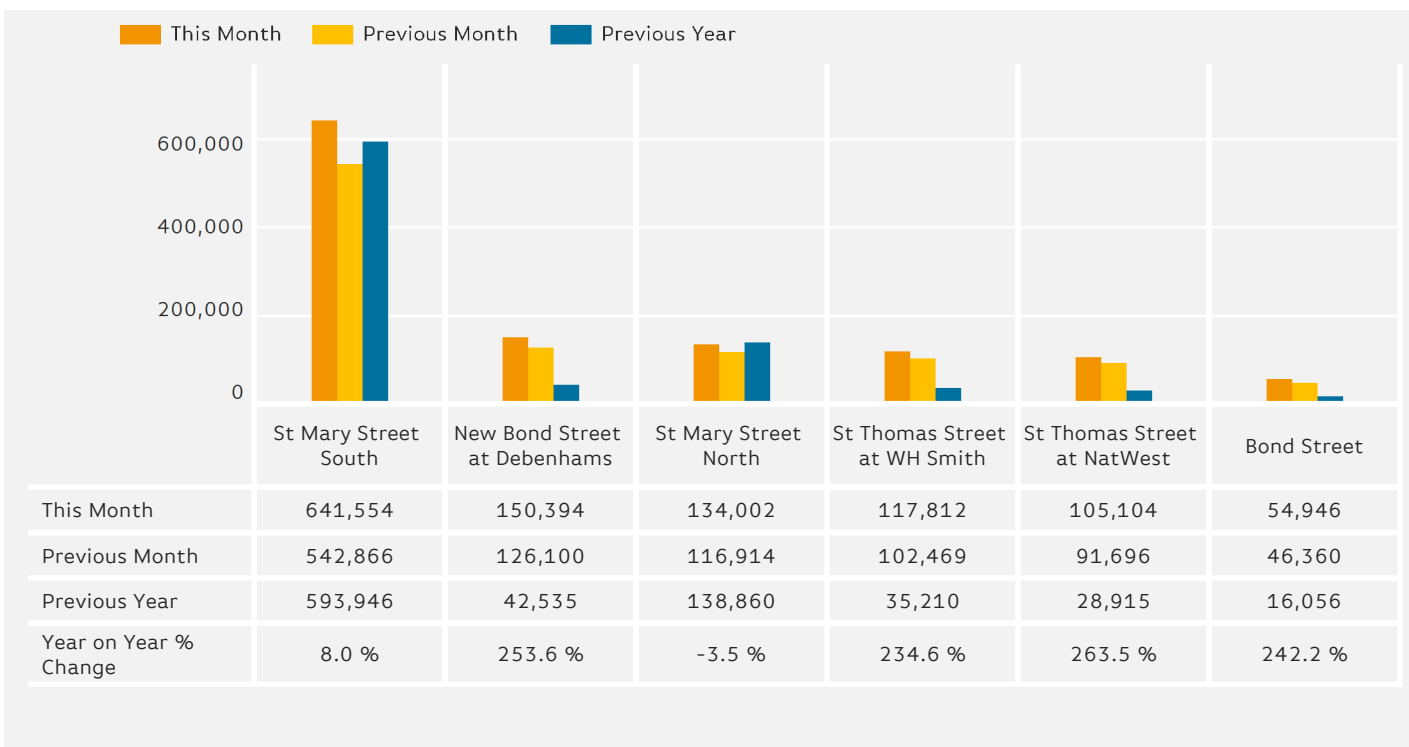
Footfall by Week of Month

The figures shown below are calculated using weekly totals.



Footfall Totals

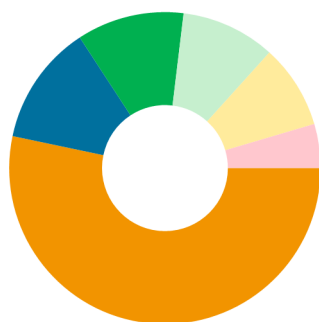
The figures shown below are calculated using weekly averages.



Footfall Totals

Counting By Location - Main Locations Only

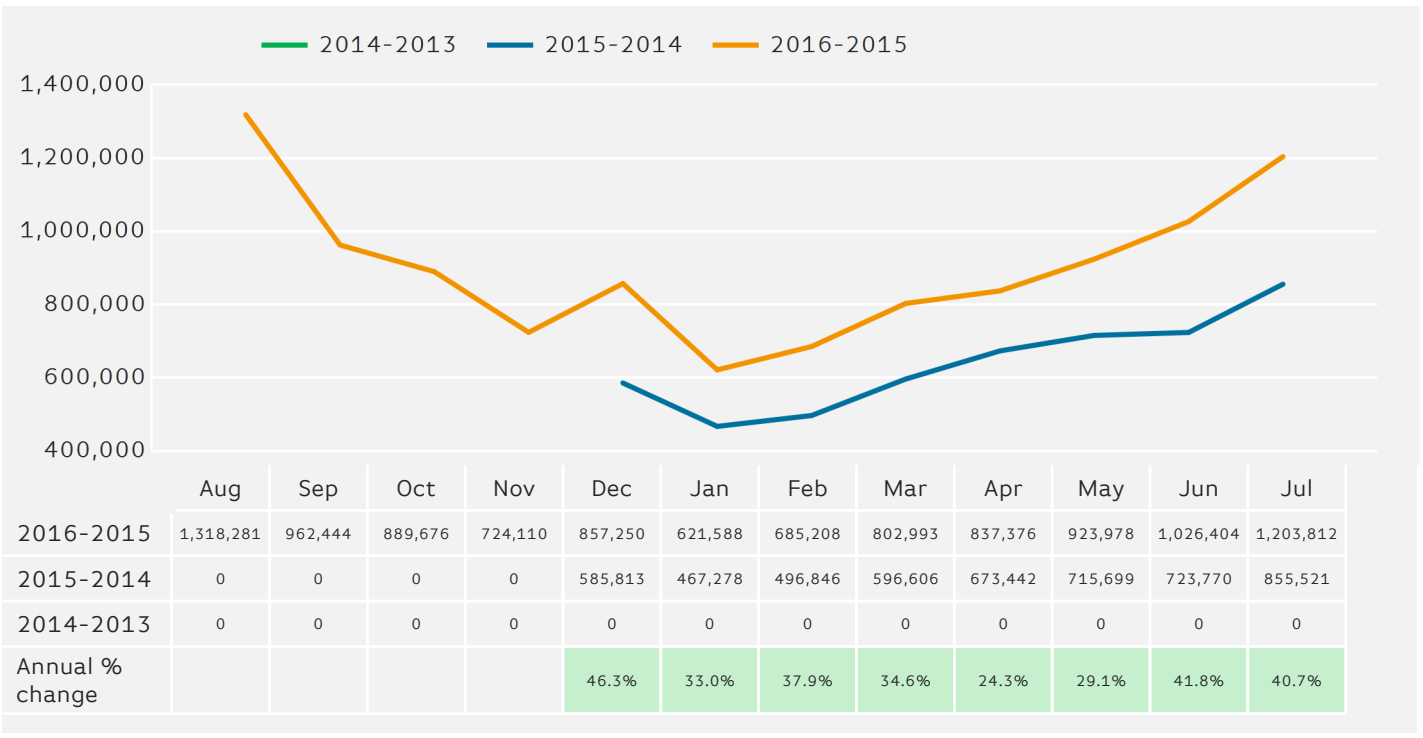
The figures shown below are based on weekly averages



- St Mary Street South, 53.3 %
- New Bond Street at Debenhams, 12.5 %
- St Mary Street North, 11.1 %
- St Thomas Street at WH Smith, 9.8 %
- St Thomas Street at NatWest, 8.7 %
- Bond Street, 4.6 %

Footfall - Rolling 12 Months

The figures shown below are calculated using weekly averages.



Year to Date % Change is the annual % change in footfall from January of this year compared to the same period last year.
 Year on Year % Change is the % change in footfall for this week compared to the same week in the previous year.
 Week on Week % Change is the % change in footfall for this week from the previous week.